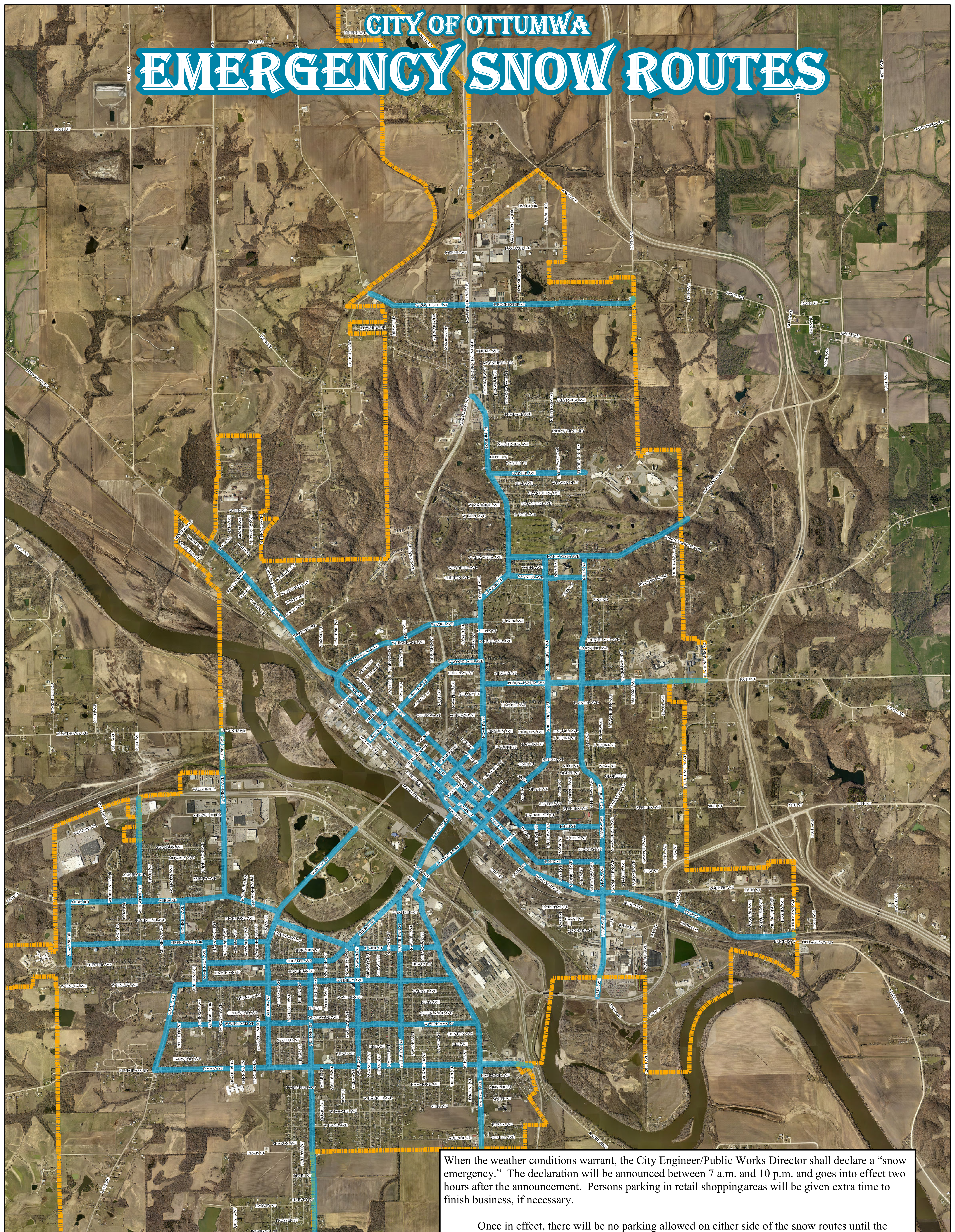
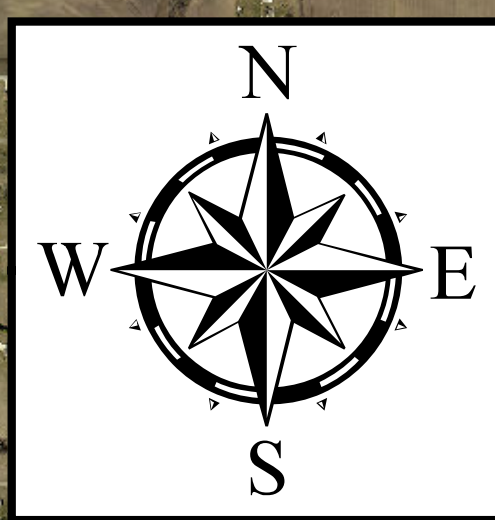


# CITY OF OTTUMWA EMERGENCY SNOW ROUTES



## LEGEND

- Emergency Snow Routes
- - - City Limits



When the weather conditions warrant, the City Engineer/Public Works Director shall declare a "snow emergency." The declaration will be announced between 7 a.m. and 10 p.m. and goes into effect two hours after the announcement. Persons parking in retail shopping areas will be given extra time to finish business, if necessary.

Once in effect, there will be no parking allowed on either side of the snow routes until the emergency is lifted. Parking on non snow emergency routes where vehicles are allowed to park on both sides or just one side of the street, the following parking policy will be as follows. On the even numbered days of the month, parking will be allowed on the even numbered side of the street. On the odd numbered days of the month, parking will be allowed on the odd numbered side of the street. **Drivers can begin moving their cars to the opposite side of the street at 7:00 PM to comply with the side designated for the next day.**

**STALLED OR ILLEGALLY PARKED VEHICLES DURING SNOW EMERGENCY:** The police department will have stalled or illegally parked vehicles towed and impounded and a citation will be issued and fee charged for towing and impoundment.

**DEPOSIT OF SNOW ON CITY STREETS:** Persons shall not remove snow and/or ice from private property and deposit on any public street, alley or sidewalk. If this occurs, the Police Department will issue citations.