

SAFE, SECURE AND PROTECTED

YOUR WELLMARK HEALTH INSURANCE COVERAGE KEEPS YOU SAFE, SECURE AND PROTECTED FROM MORE THAN THE COST OF HEALTH CARE. Just by being a member, you and your dependents have exclusive access to identity protection services called MyIDCare™. It's just another way you get more as a Wellmark member.

Priceless peace of mind

Join thousands of people around the country who have already chosen MyIDCare, a service provided by nationally recognized identity protection provider, ID Experts®.

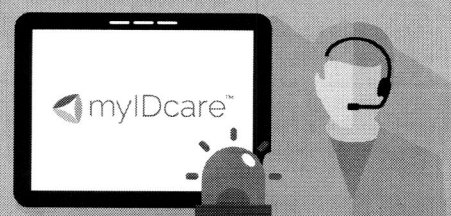
With MyIDCare, you can:



Monitor your credit record.



Keep track of your online activity 24 hours a day, seven days a week.

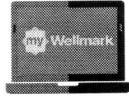


Have access to complete identity recovery if fraudulent activity is found.

Enroll in identity protection services today!

Register or sign in to **myWellmark** at Wellmark.com to get started.

STEP 1



Select "enroll or log in today" in the Identity Protection section of myWellmark.

STEP 2



4170999624

Enter the MyIDCare Member Enrollment Code: 4170999624.

STEP 3



Group ID



Wellmark ID

Fill out the Group ID and Wellmark ID numbers, both found on your Wellmark ID card. Click "continue" and follow the directions to complete your enrollment.

STEP 4



Enter your personal information and create a username and password.

STEP 5



To activate credit monitoring, enter your birth date and Social Security number.

Rather enroll over the phone?

JUST CALL 866-486-4812 and make sure you have your Wellmark ID number and Member Enrollment Code handy.



Identity protection services aren't the only ways you get more for being a Wellmark member.

As part of your health plan, you also have access to products and services like:



myWellmark — your one-stop-shop for tools and resources to help you get the most out of your health care benefits.



BeWell 24/7SM — get connected with a real person who can help you with a variety of health-related concerns. Just call **844-84-BEWELL (239355)**.



Blue365[®] — find exclusive ways to save on top wellness services and products you use every day.



Health Care Cost Estimator — figure out how much it will cost you for a particular procedure or service. Just register or log in to myWellmark at Wellmark.com.



Wellmark Blue Cross and Blue Shield is an Independent Licensee of the Blue Cross and Blue Shield Association.

Blue365[®] is a discount program available to members who have medical coverage with Wellmark. This is not insurance.

MyIDCare is provided by ID Experts, an independent company providing identity protection services on behalf of Wellmark Blue Cross and Blue Shield.